




| REVISION STATUS - ALL SHEETS ARE THE SAME REVISION | | | | |
|--|-----|---------------------------|----------------------|----------|
| ZONE | REV | DESCRIPTION | DATE | APPROVED |
| | A | RLSD (SUPSD ISS 2 W/CHNG) | ER03536 8-16-11 | RKM |
| | B | ADDED HOLE TO J1 | ECN DE19590 12-13-11 | RKM/JMB |

NOTES: (UNLESS OTHERWISE SPECIFIED)

- WORKMANSHIP SHALL BE IN ACCORDANCE WITH IPC-A-610, CLASS 2.
- PRECAUTIONARY PACKAGING, HANDLING, AND PROCESSING PROCEDURES SHALL BE USED TO PREVENT DAMAGE FROM ELECTROSTATIC, ELECTROMAGNETIC AND OTHER ENVIRONMENTAL FIELD FORCES. HANDLING SHALL BE IN ACCORDANCE WITH SPARTON DOCUMENT ES-0609.
- ASSEMBLE COMPONENTS PER ORIENTATION MARKS. A SQUARE PAD FOR THRU-HOLE COMPONENTS OR AN ISOLATED SQUARE PAD FOR SMT COMPONENTS INDICATE THE PIN NUMBER 1 FOR INTEGRATED CIRCUITS AND CONNECTORS; THE POSITIVE SIDE OF CAPACITORS; AND THE CATHODE OF DIODES.
- SOLDER IN ACCORDANCE WITH IPC/J-STD-001, CLASS 2.
- POST-SOLDERING CLEANLINESS SHALL BE IN ACCORDANCE WITH SPARTON DOCUMENT ES-0849.
- THRU-HOLE COMPONENT LEADS AND SOLDER JOINTS MAY NOT PROTRUDE MORE THAN 0.10 INCHES FROM PRINTED WIRING BOARD.
- COMPONENT HEIGHT ON PRIMARY SIDE IS 0.492 MAXIMUM. COMPONENT HEIGHT ON SECONDARY SIDE IS 0.194 MAXIMUM.
-  FOR THE SOLDER PASTE STENCILS, USE SPARTON SUPPLIED GERBER FILES IDENTIFIED IN THE FILE DESCRIPTION TABLE.
- THE CONFIGURATION TO WHICH THIS ASSEMBLY IS MANUFACTURED SHALL BE IDENTIFIED BY A TRACEABLE AND DEFINED CODE MARKED ON THE ASSEMBLY IN A PERMANENT AND LEGIBLE MANNER.
- FOR SCHEMATIC REPRESENTATION SEE SHEET 3.
- THIS PRINTED WIRING BOARD ASSEMBLY SHALL MEET ALL OF THE REQUIREMENTS OF THE RESTRICTION OF HAZARDOUS SUBSTANCES (RoHS) DIRECTIVE 2002/95/EC. THE PRINTED WIRING BOARD SHALL HAVE MARKINGS AND SYMBOLS IN ACCORDANCE WITH IPC-1066 INDICATING COMPLIANCE.
-  PADS ONLY. DO NOT POPULATE.

| FILE DESCRIPTION TABLE  | | |
|--|-----------------------|------|
| DESCRIPTION | ELECTRONIC FILE NAMES | REV. |
| GERBER PLOT DATA: | | |
| PRIMARY SIDE SOLDER PASTE | 130-7344A.PSP | A |
| SECONDARY SIDE SOLDER PASTE | 130-7344A.SSP | A |
| COMPRESSED FILE | 130-7344A_GBR.ZIP | A |

| 001 | AS SHOWN |
|----------|-------------|
| DASH NO. | DESCRIPTION |

RoHS COMPLIANT
FOR PARTS LIST SEE SEPARATE BILL OF MATERIAL

EXPORT CONTROLLED - WARNING
THIS DOCUMENT CONTAINS INFORMATION WITHIN THE DEFINITION OF THE US INTERNATIONAL TRAFFIC IN ARMS REGULATIONS (ITAR) OR THE US EXPORT ADMINISTRATION REGULATIONS (EAR). THIS INFORMATION MAY NOT BE EXPORTED, RELEASED, OR DISCLOSED TO FOREIGN NATIONALS, WHETHER IN THE UNITED STATES OR ABROAD, WITHOUT FIRST COMPLYING WITH THE EXPORT LICENSING REQUIREMENTS OF THE ITAR AND/OR EAR.

CAUTION



ELECTROSTATIC SENSITIVE DEVICES

AUTOCAD DOCUMENT
DESIGNED WITH PCAD 2004

| | | | |
|--|--|-------------|--------------|
| UNLESS OTHERWISE SPECIFIED: DIMENSIONS ARE IN INCHES | ENGINEER | V. CHIAMPOU | 8-15-11 |
| | ENGINEER | C. QUINTERO | 8-12-11 |
| TOLERANCES ARE: ANGLES | ENGINEER | MIROSLAW G. | 8-12-11 |
| | CHECKED | RKM | 7-26-11 |
| .XX ± .01 .XXX ± .005 | DRAWN | MJC | 1-12-11 |
| | MANAGER APPROVAL DAVID POWELL 8-15-11 | | |
| INTERPRET DRAWINGS IN ACCORDANCE WITH: ASME Y14.38-1999 ASME Y14.5M-1994 ASME Y14.6-2001 ASME Y14.8M-1996 AWS Y42.4-98 IEEE STD 315-1975 | THE INFORMATION DISCLOSED ON THIS DRAWING IS PROPRIETARY AND SHALL NOT BE DISCLOSED, USED OR DUPLICATED FOR PROCUREMENT OF MANUFACTURING PURPOSES WITHOUT THE EXPRESS WRITTEN CONSENT OF SPARTON. SAMPLES MUST BE APPROVED BY SPARTON ENGINEERING DEPARTMENT PROCEEDING WITH PRODUCTION. | | |
| | THIRD ANGLE PROJECTION | | |
| DIGITAL COMPASS | DRAWING TITLE | | |
| USED ON | PWB ASSEMBLY, COMPASS ADAPTER, RANCHERO | | |
| APPLICATION | SIZE | CAGE CODE | DRAWING NO |
| | D | 7A529 | 130-7342 |
| | SCALE | NONE | SHEET 1 OF 3 |

SPARTON

DRAWING TITLE
PWB ASSEMBLY,
COMPASS ADAPTER, RANCHERO

SIZE: D
CAGE CODE: 7A529
DRAWING NO: 130-7342
REV: B
SCALE: NONE
SHEET 1 OF 3

8 7 6 5 4 3 2 1

D

C

B

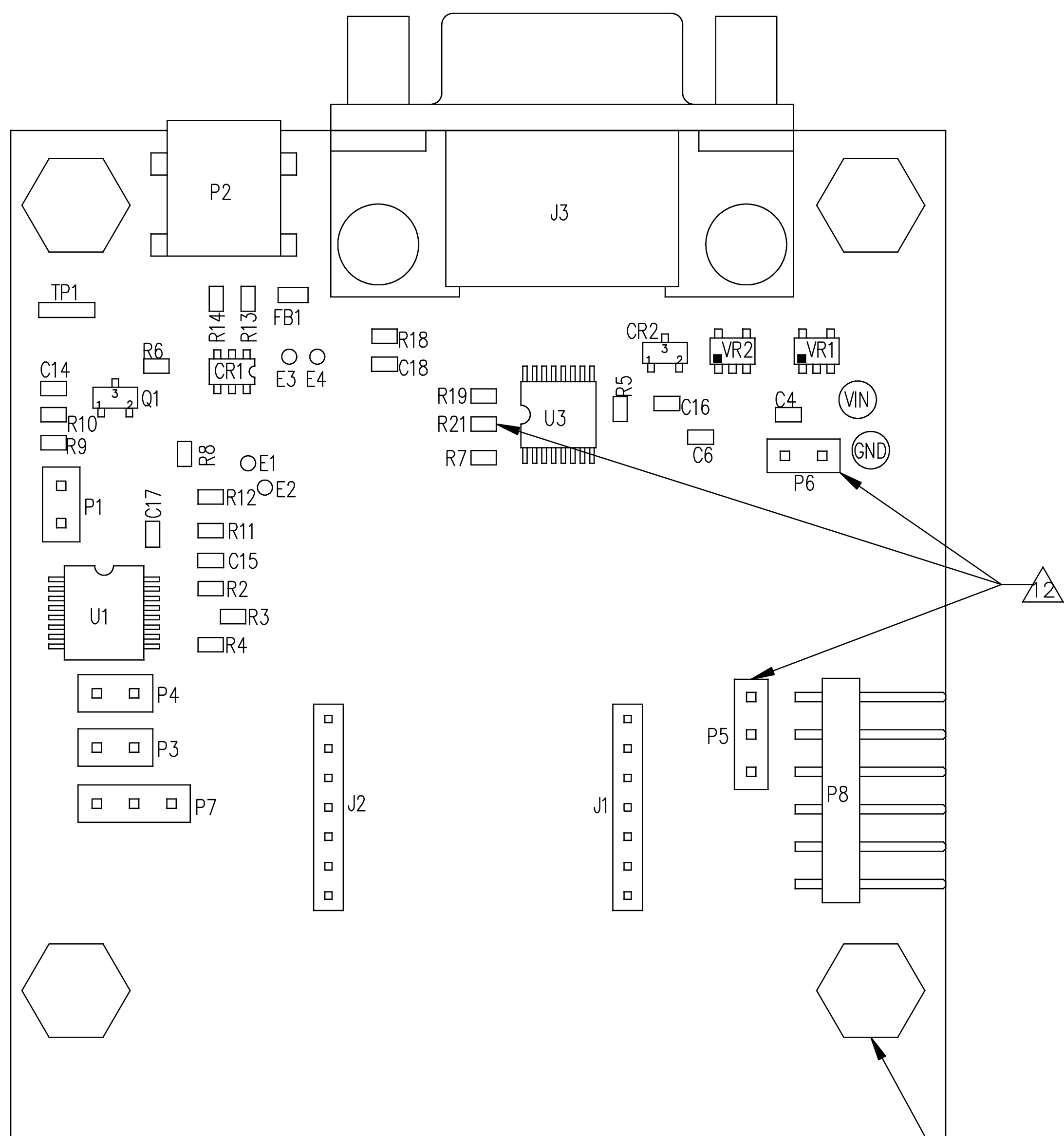
A

D

C

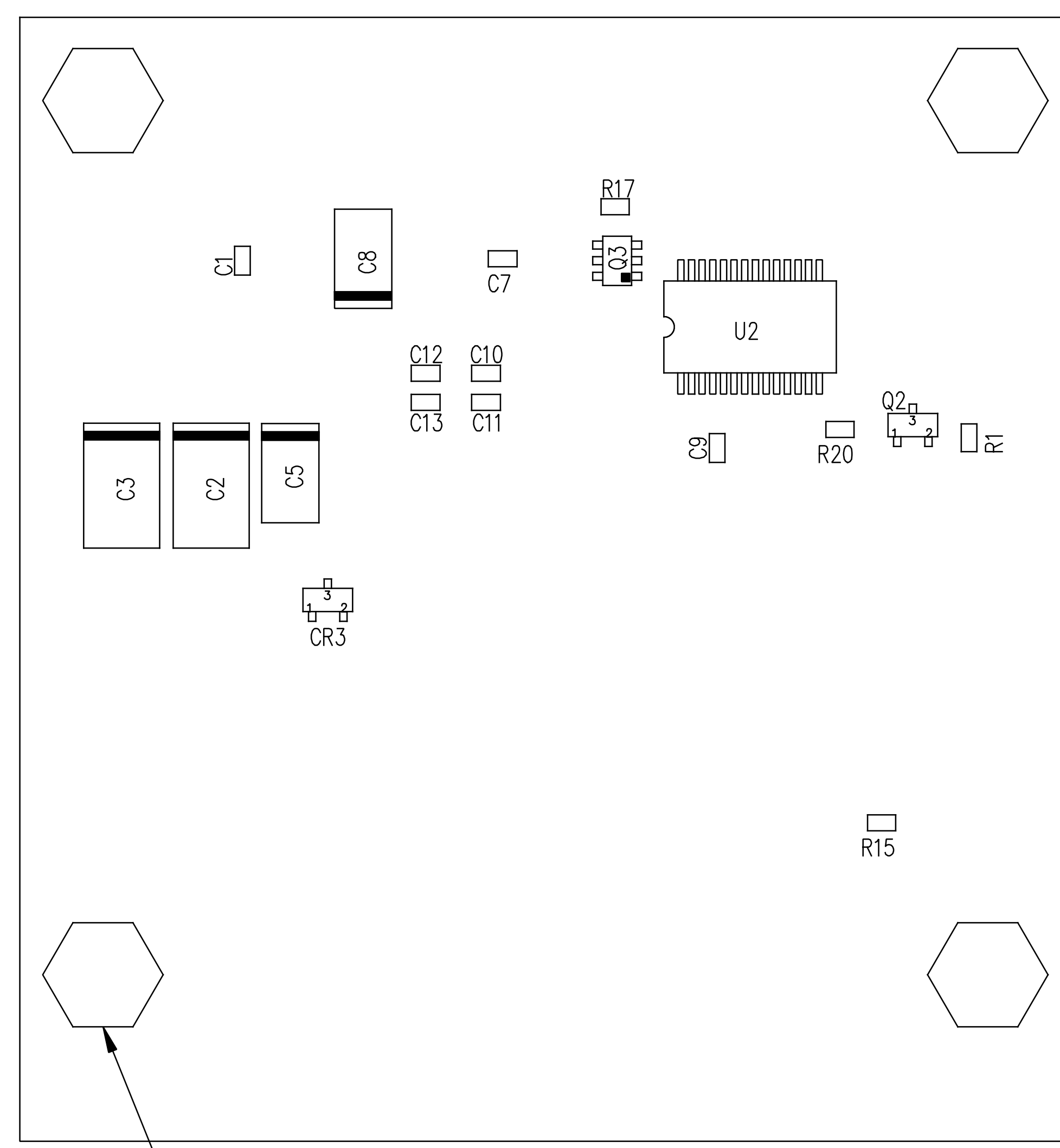
B

A



PRIMARY SIDE

2
4X



SECONDARY SIDE

1
4X

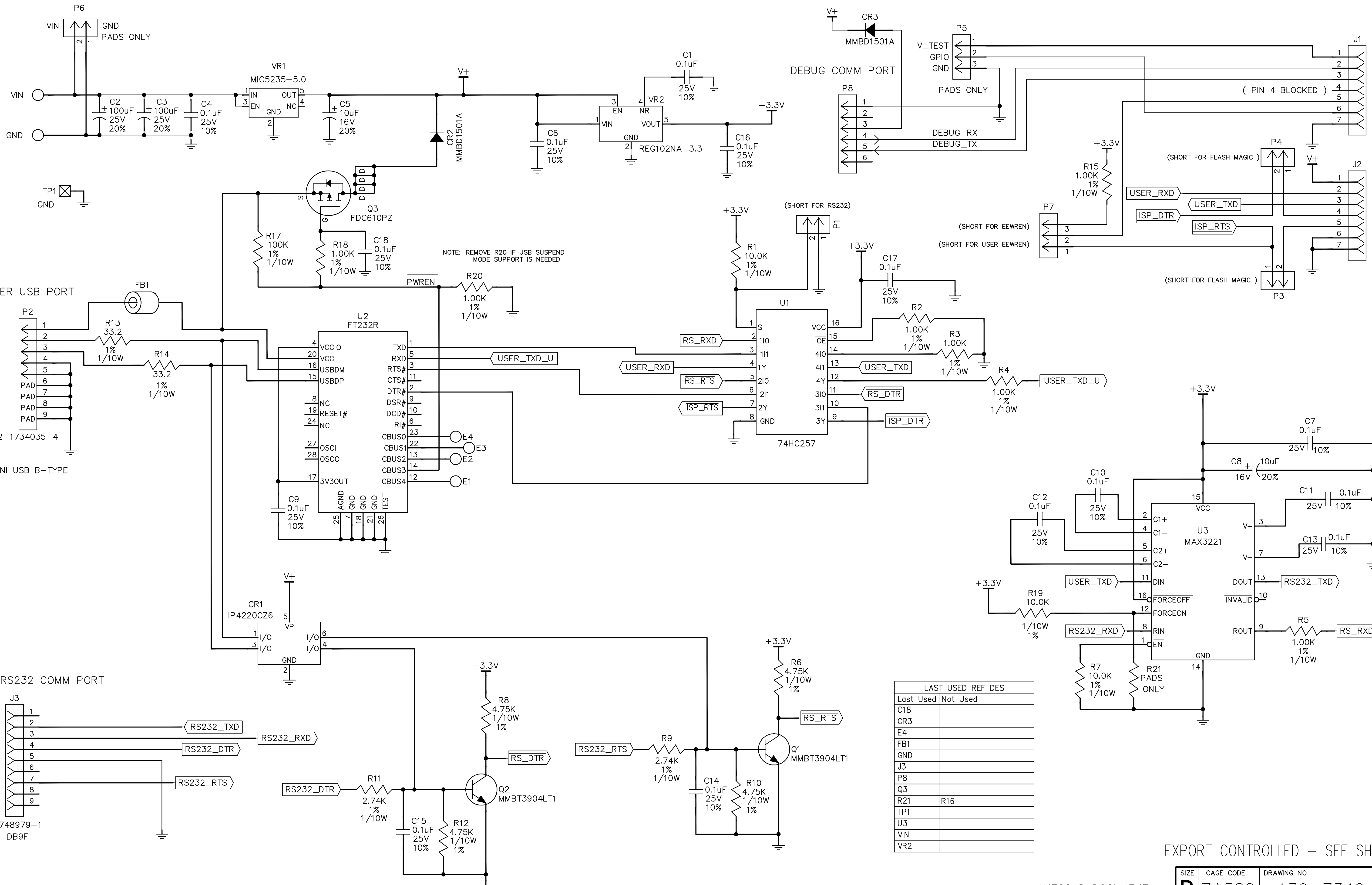
EXPORT CONTROLLED - SEE SHEET 1

AUTOCAD DOCUMENT
DESIGNED WITH PCAD 2004

| SIZE | CAGE CODE | DRAWING NO | REV |
|-------------|-----------|------------|-----|
| D | 7A529 | 130-7342 | B |
| SCALE 4 : 1 | | SHEET 2 | |

MULTI SHEET 1

8 7 6 5 4 3 2 1



NOTE: REMOVE R20 IF USB SUSPEND MODE SUPPORT IS NEEDED

| LAST USED REF DES | |
|-------------------|----------|
| Last Used | Not Used |
| C18 | |
| CR3 | |
| E4 | |
| FB1 | |
| GND | |
| J3 | |
| P8 | |
| Q3 | |
| R21 | R16 |
| TP1 | |
| U3 | |
| VIN | |
| VR2 | |

EXPORT CONTROLLED - SEE SHEET 1

AUTOCAD DOCUMENT
DESIGNED WITH PCAD 2004

| | | | |
|-------|-----------|------------|-----|
| SIZE | CAGE CODE | DRAWING NO | REV |
| D | 7A529 | 130-7342 | B |
| SCALE | NONE | SHEET 3 | |